

Appendix B  
Historic Properties and Cultural Impacts

Nenana-Totchaket Road Project  
NSHWY00657

## Consultation Initiation





In Reply Refer To:  
Nenana-Totchaket Road  
State Funded Work: NSHWY00657  
Consultation Initiation

January 12, 2022

Judith E. Bittner, Chief  
Alaska Office of History and Archaeology  
555 W. 7<sup>th</sup> Avenue, Suite 1310  
Anchorage, AK 99501-3565

Dear Ms. Bittner:

The Alaska Department of Transportation and Public Facilities (DOT&PF) is seeking to construct the Nenana-Totchaket Road from the Nenana River to the Kantishna River, near Nenana Alaska. The project will include improving approximately 12 miles of existing road and constructing 20 miles of new road (see Table 1 and Figures 1-5).

**Table 1: Project Location**

Township	Range	Section(s)	USGS Quad Map	Meridian
004S	008W	14, 18-23	Fairbanks C-5	Fairbanks
004S	009W	7-8, 10-13, 15-16	Fairbanks C-5	Fairbanks
004S	010W	11-12	Fairbanks C-5	Fairbanks
004S	010W	7-11	Fairbanks C-6	Fairbanks
004S	011W	7-12	Fairbanks C-6	Fairbanks
004S	012W	8-12	Fairbanks C-6	Fairbanks
004S	012W	6-8	Kantishna River C-1	Fairbanks
004S	013W	1, 9-12,16	Kantishna River C-1	Fairbanks
003S	013W	35-36	Kantishna River C-1	Fairbanks

Pursuant to AS 41.35.070, Preservation of Historic, Prehistoric, and Archaeological Resources Threatened by Public Construction, the DOT &PF is initiating this consultation with you to assist us in identifying historic properties that may be affected by the proposed project.

## Project Description

**Rehabilitation:** The existing approximately 12-mile roadway is proposed to undergo minor-relevelling in areas that have experienced settling, flattening of embankment side slopes, installation of new surface course, clearing of vegetation at slope toes, minor repair of three bridge crossings (Little Nenana River Bridge #1557, East Middle River Bridge #1559, and West Middle River Bridge #1558), and some drainage improvements including culvert replacement and ditch work. Existing turnouts are also proposed to be improved, and new turnouts may be constructed as needed to support hauling materials during construction. No realignment of the existing roadway is anticipated (see Figures 2-4).

**Extension:** Approximately 20 miles of new road is proposed to be constructed to extend the existing Totchaket Road, extending westerly to end at the Kantishna River. The first 16 miles of new road is proposed to be built within the City of Nenana's existing 500' wide right-of-way (ROW) easement, and new ROW acquisition would be required for the remainder (see Figures 2, 4-5). For the westernmost section of the proposed extension, there are two Proposed Alternatives:

**Alternative 1:** In this option, the proposed road will maintain the bearing of the preceding road extension alignment, extending westerly an additional 4.5 miles to the east bank of the Kantishna River (see Figure 5).

**Alternative 2:** In this option, the proposed road will alter course, taking on a northwesterly bearing. The proposed road would then extend approximately 3 miles over higher ground to terminate at a point further north near the Kantishna River (see Figure 5).

**Material Sources:** Materials to construct the road are anticipated to be extracted from combination of new site development within the floodplain of the Kantishna River near the western end of the new road (see Figure 5), utilization of material extracted within upland areas along the ROW alignment (see Figures 2, 4-5), as well as contractor-furnished from existing commercially available sources (see Figure 3 inset, owned and operated by the City of Nenana). Due to lack of information for the area, general material extraction zones have been identified for study (see Figures 2-5 in yellow). As more detailed data becomes available, the proposed material extraction zones will be refined.

### Preliminary Area of Potential Effect (APE)

The preliminary APE for this proposed project is shown on Figures 1-5 and consists of the 500' ROW boundary of the existing portion of the Totchaket Road (see Figures 1-4) and the proposed extension area (also 500' ROW) of the Totchaket Road (see Figures 1, 4-5), including the two possible alternatives (see Figure 5). Alternative 1 maintains the bearing of the preceding road extension alignment, extending westerly an additional 4.5 miles to the east bank of the Kantishna River. Alternative 2 alters the course of the Totchaket Road, extending approximately 3 miles in a northerly direction, also terminating at the Kantishna River. The preliminary APE also includes the city-owned material source, and the drivable surface of the associated haul route [Nenana Street, 6<sup>th</sup> Street, Parks Highway (near MP 304), 10<sup>th</sup> Avenue, and an unnamed existing trail] (see Figure 3 inset map). Additionally, the preliminary includes material extraction zones within the proposed alignment of the Totchaket Road extension area (see Figures 4-5, highlighted in yellow).

Finally, the preliminary APE covers the proposed material extraction zones adjacent to the two proposed alternatives. If Alternative 1 is selected, the preliminary APE will include two, smaller, material extraction zones (see Figure 5, highlighted in yellow). If Alternative 2 is selected, the preliminary APE will include one, larger, material extraction zone (see Figure 5, highlighted in yellow). Staging locations for this project have not been determined but will be included in the findings letter for this project.

The Area of Potential Effect (APE) will be finalized after comments are received from your agency and other consulting parties.

### **Identification Efforts**

A search of the Alaska Heritage Resources Survey-IBS (AHRS) database on January 12, 2022 indicated that no (0) AHRS sites are located within the preliminary APE.

A search of the Alaska Department of Natural Resources Division of Mining, Lands and Water Revised Statute (RS) 2477 database indicates that there is one (1) recognized public rights-of-way under this Statute within the preliminary APE. That RS 2477 trail is briefly described below:

*RST-346 Nenana-Kantishna Trail*- This trail begins at Nenana, Alaska and follows south and west along the eastern bank of the Teklanika River. It continues along the eastern bank of the Toklat River, traversing to the south and to the west, eventually crossing over to the western bank of the Toklat River. The trail continues on to cross the Clearwater River, following the western bank. The trail continues along the western bank of Myrtle Creek, and then along the northern bank of Canyon Creek. The trail ends in Kantishna, Alaska at the junction of Lake Creek. The trail traverses overland for approximately 100 miles between the two communities. The trail is listed as a winter trail on the topographic map layer in the AHRS database. A review of the satellite imagery revealed that the trail is not visible on the ground surface.

A search of the DOT&PF Northern Region Cultural Resources Library indicated that the existing portion of the Totchaket Road was previously surveyed for cultural resources (Proue and Neely 2009), and no sites were found within the preliminary APE as a result of that survey. The remaining portion of the preliminary APE has not been previously surveyed. A cultural resources survey for the new road extension (including both alternatives) will be completed by an as yet to be determined cultural resources consultant. The results of that survey will be included with the findings letter for this project. The DOT&PF Archaeologist-Cultural Resources Specialist (PQI) believes that this level of identification is sufficient for this project.

### **Consultation Efforts**

The following consulting parties are being contacted regarding this project: The Chief of the Office of History and Archaeology (OHA); Doyon, Limited; the City of Nenana; Nenana Native Association; Tanana Chiefs Conference; and Toghoththele Corporation.

If you have questions or comments related to this proposed project, I can be reached at the address above, by telephone at 907-451-2227, or by email at [holly.mckinney@alaska.gov](mailto:holly.mckinney@alaska.gov).

We request your input on our proposal so that we can incorporate your concerns into project development. Your timely response will greatly assist our compliance efforts and the preparation of any required environmental documentation. For that purpose, we request that you respond within thirty days of your receipt of this correspondence.

Sincerely,



Holly J. McKinney

Environmental Impact Analyst III-Archaeologist (PQI)  
State of Alaska DOT&PF Northern Region

Enclosures:

Figure 1: Project Overview Map  
Figures 2-5: Location Maps/Preliminary APE.

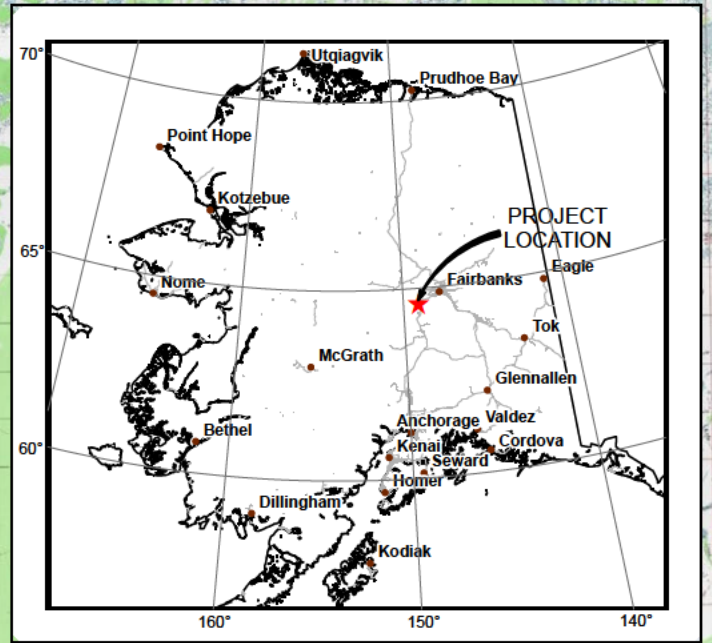
References:

Proue, M. and B. Neely  
2009 Nunivak #1 Drill Site and Totchaket Road Rehabilitation Monitoring Plan. Plan prepared for Fairweather, Inc. Exploration and Production Services. Northern Land Use Research, Inc., Anchorage.

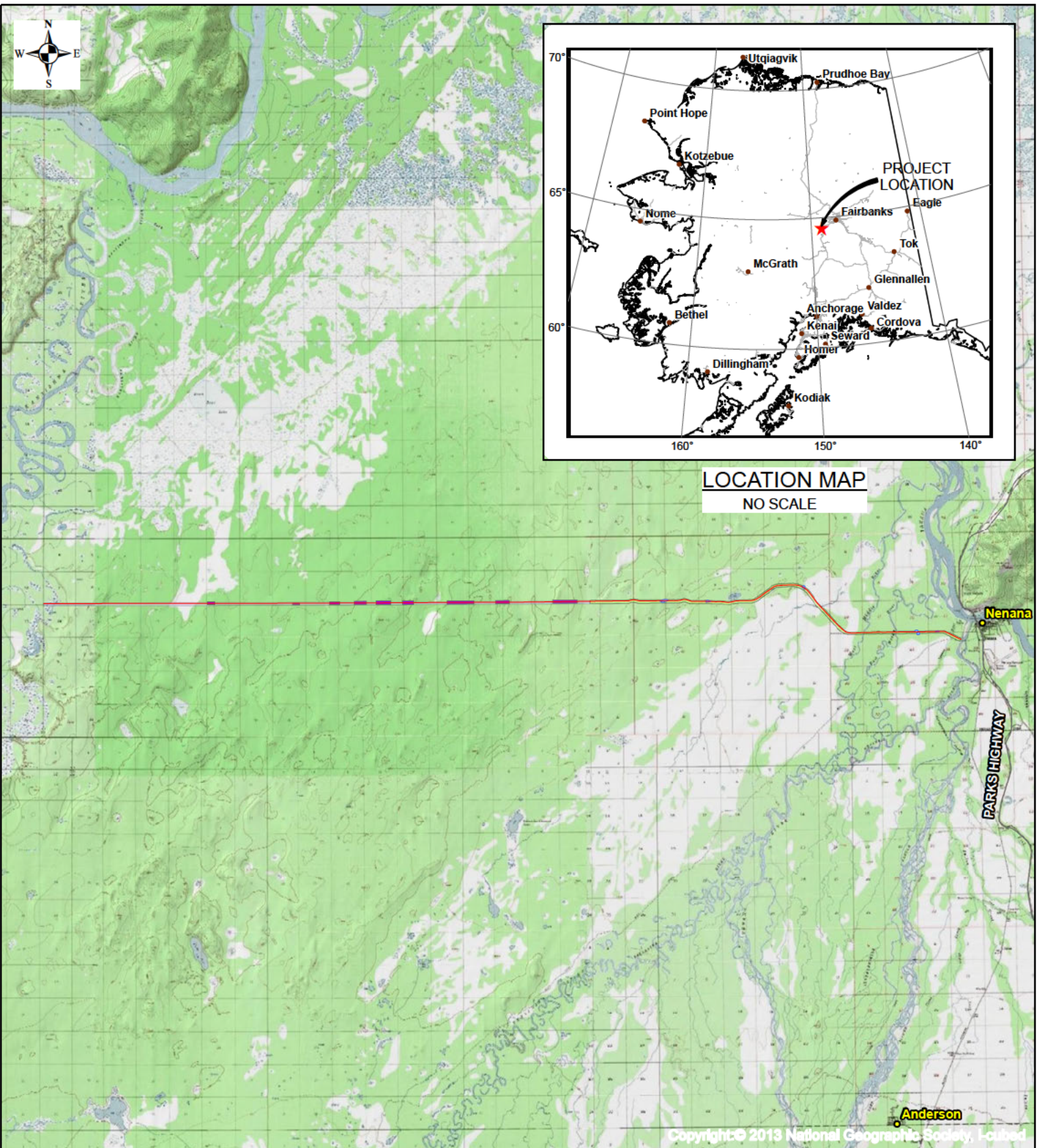
Electronic cc w/enclosures:

Jonathan Hutchinson, P.E., DOT&PF, Northern Region, Project Manager  
William Sexton, DOT&PF Northern Region, Environmental Impact Analyst  
Brett Nelson, DOT &PF Northern Region, Regional Environmental Manager  
Kathy Price, DOT&PF Statewide Cultural Resource Manager





**LOCATION MAP**  
NO SCALE



Copyright © 2013 National Geographic Society, Inc.



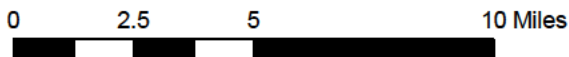
<u>Township and Range</u>	<u>Sections</u>
T4SR12W	7-13
T4SR11W	7-17
T4SR10W	7-12, 14-18
T4SR9W	7-13, 15-18
T4SR8W	15-22

**Fairbanks Meridian**

**VICINITY MAP**  
NO SCALE

STATE OF ALASKA  
Department of Transportation and Public Facilities  
2301 Peger Road Fairbanks, AK 99709

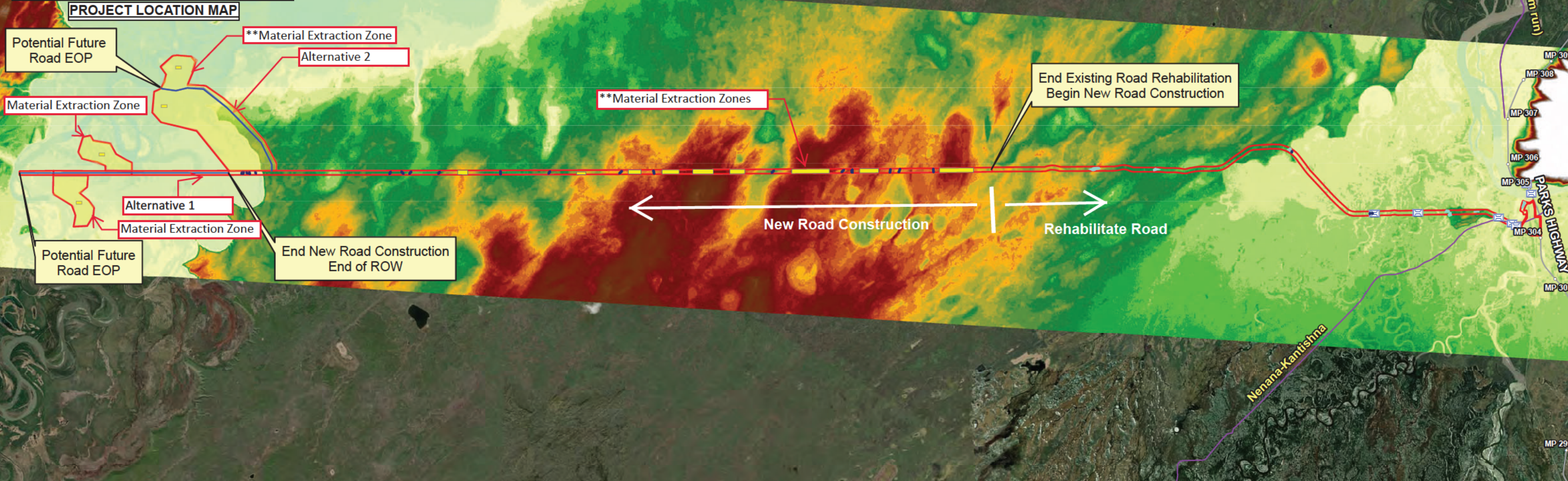
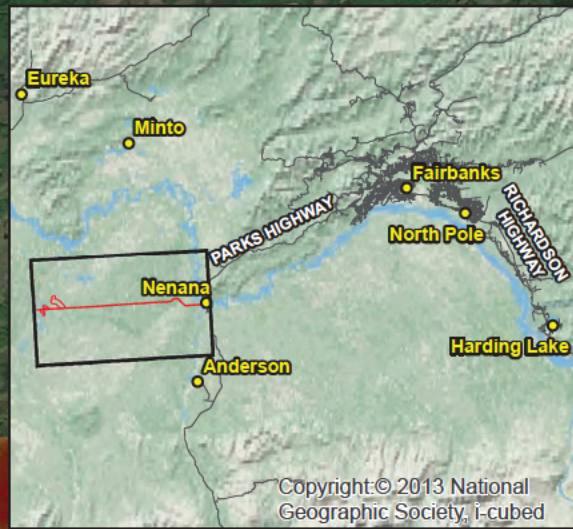
**NENANA-TOTCHAKET ROAD**  
NFHWY00657  
NENANA, ALASKA



Date: December 2021

Figure 1





**Legend**

**IFSAR Terrain Data (meters)**

91 - 93	111 - 114	132 - 135	156 - 159	180 - 183
93 - 96	114 - 117	135 - 138	159 - 162	183 - 186
96 - 99	117 - 120	138 - 141	162 - 165	186 - 189
99 - 102	120 - 123	141 - 144	165 - 168	189 - 192
102 - 105	123 - 126	144 - 147	168 - 171	192 - 195
105 - 108	126 - 129	147 - 150	171 - 174	195 - 198
	129 - 132	150 - 153	174 - 177	198 - 201
		153 - 156	177 - 180	201 - 204

**\*\* MATERIAL EXTRACTION ZONES:** These zones represent general areas in which materials may be extracted. Extraction will occur in smaller 1 to 10 acre cells. The total disturbed area within all extraction zones will not exceed 70 acres, including 50 acres within the road R/W, and 20 acres within/adjacent to the Kantishna River floodplain.

- Bridges
- Alternatives 1&2
- Material Extraction Zone
- Preliminary APE
- RS2477 Trails
- Proposed Culverts
- Material Sites



STATE OF ALASKA  
Department of Transportation and Public Facilities  
2301 Peger Road Fairbanks, AK 99709

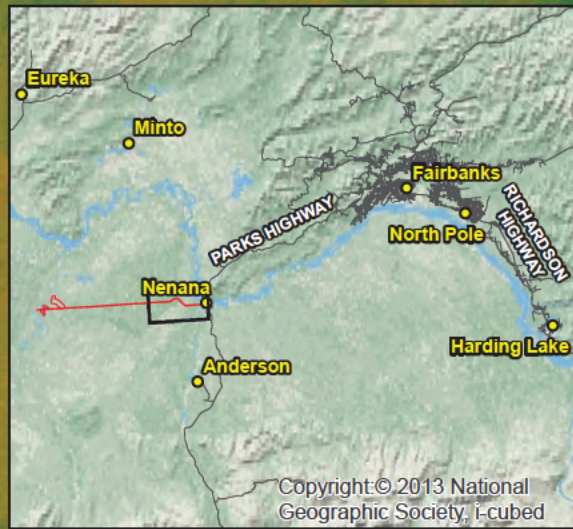
Date: December 2021

Figure 2

**Nenana Totchaket Road**

Document Path: H:\Projects\Communities\Nenana\Totchaket\NENANA\_r3.mxd





**PROJECT LOCATION MAP**

City owned, existing Material Source

existing road, proposed haul route

existing trail, proposed haul route

**EXISTING DREDGE SITE AND HAUL ROUTE**

BOP

**Legend**

**IFSAR Terrain Data (meters)**

108 - 111	132 - 135	156 - 159	180 - 183
111 - 114	135 - 138	159 - 162	183 - 186
91 - 93	138 - 141	162 - 165	186 - 189
93 - 96	141 - 144	165 - 168	189 - 192
96 - 99	144 - 147	168 - 171	192 - 195
99 - 102	147 - 150	171 - 174	195 - 198
102 - 105	150 - 153	174 - 177	198 - 201
105 - 108	153 - 156	177 - 180	201 - 204

⊠ Bridges     
 — Alternatives 1&2     
 ■ Material Extraction Zone     
 □ Preliminary APE

— RS2477 Trails     
 — Proposed Culverts     
 ■ Existing Material Sites

0      0.5      1      2 Miles

STATE OF ALASKA  
 Department of Transportation and Public Facilities  
 2301 Peger Road Fairbanks, AK 99709

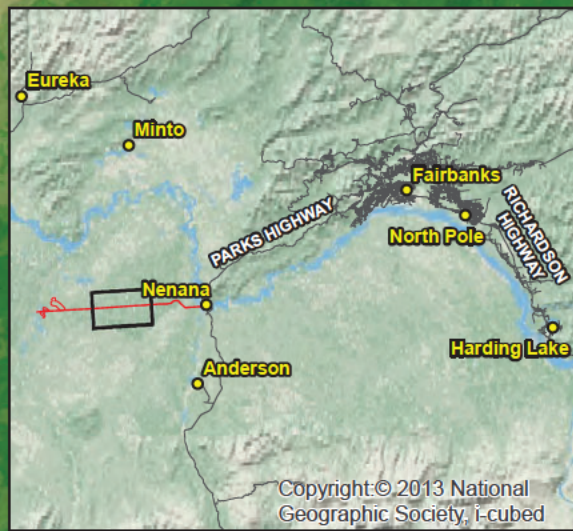
Date: December 2021

Figure 3

**Nenana Totchaket Road**

Document Path: H:\Projects\Communities\Nenana\Totchaket\NENANA\_r3.mxd





End Existing Road Rehabilitation  
Begin New Road Construction

\*\*Material Extraction Zones

\*\*Material Extraction Zones

← New Road Construction →  
→ Rehabilitate Road ←

**Legend**

**IFSAR Terrain Data (meters)**

91 - 93	108 - 111	132 - 135	156 - 159	180 - 183
93 - 96	111 - 114	135 - 138	159 - 162	183 - 186
96 - 99	114 - 117	138 - 141	162 - 165	186 - 189
99 - 102	117 - 120	141 - 144	165 - 168	189 - 192
102 - 105	120 - 123	144 - 147	168 - 171	192 - 195
105 - 108	123 - 126	147 - 150	171 - 174	195 - 198
	126 - 129	150 - 153	174 - 177	198 - 201
	129 - 132	153 - 156	177 - 180	201 - 204

**\*\* MATERIAL EXTRACTION ZONES:** These zones represent general areas in which materials may be extracted. Extraction will occur in smaller 1 to 10 acre cells. The total disturbed area within all extraction zones will not exceed 70 acres, including 50 acres within the road R/W, and 20 acres within/adjacent to the Kantishna River floodplain.

- Bridges
- Road\_Extensions
- Material Extraction Zone
- Preliminary APE
- RS2477 Trails
- Proposed Culverts
- Existing Material Sites



STATE OF ALASKA  
Department of Transportation and Public Facilities  
2301 Peger Road Fairbanks, AK 99709

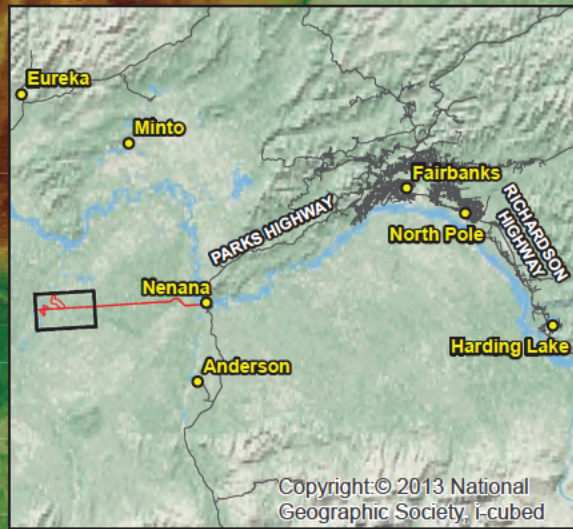
Date: December 2021

Figure 4

**Nenana Totchaket Road**

Document Path: H:\Projects\Communities\Nenana\Totchaket\NENANA\_r3.mxd





Potential Future Road EOP

\*\*Material Extraction Zone

Alternative 2

\*\*Material Extraction Zone

\*\*Material Extraction Zone

Alternative 1

End New Road Construction  
End of Existing ROW

Potential Future Road EOP

\*\*Material Extraction Zone

Document Path: H:\Projects\Communities\Nenana\Totchaket\NENANA\_r3.mxd

**Legend**

**IFSAR Terrain Data (meters)**

91 - 93	108 - 111	132 - 135	156 - 159	180 - 183
93 - 96	111 - 114	135 - 138	159 - 162	183 - 186
96 - 99	114 - 117	138 - 141	162 - 165	186 - 189
99 - 102	117 - 120	141 - 144	165 - 168	189 - 192
102 - 105	120 - 123	144 - 147	168 - 171	192 - 195
105 - 108	123 - 126	147 - 150	171 - 174	195 - 198
	126 - 129	150 - 153	174 - 177	198 - 201
	129 - 132	153 - 156	177 - 180	201 - 204

**\*\* MATERIAL EXTRACTION ZONES:** These zones represent general areas in which materials may be extracted. Extraction will occur in smaller 1 to 10 acre cells. The total disturbed area within all extraction zones will not exceed 70 acres, including 50 acres within the road R/W, and 20 acres within/adjacent to the Kantishna River floodplain.

- Bridges
- Alternatives 1&2
- Material Extraction Zone
- Preliminary APE
- RS2477 Trails
- Proposed Culverts
- Existing Material Sites



STATE OF ALASKA  
Department of Transportation and Public Facilities  
2301 Peger Road Fairbanks, AK 99709

Date: December 2021

Figure 5

**Nenana Totchaket Road**





In Reply Refer To:  
Nenana-Totchaket Road  
State Funded Work: NSHWY00657  
Consultation Initiation

January 12, 2022

Aaron Schutt, President  
Doyon, Limited  
1 Doyon Place  
Fairbanks, Alaska 99701

Dear Mr. Schutt:

The Alaska Department of Transportation and Public Facilities (DOT&PF) is seeking to construct the Nenana-Totchaket Road from the Nenana River to the Kantishna River, near Nenana Alaska. The project will include improving approximately 12 miles of existing road and constructing 20 miles of new road (see Table 1 and Figures 1-5).

**Table 1: Project Location**

Township	Range	Section(s)	USGS Quad Map	Meridian
004S	008W	14, 18-23	Fairbanks C-5	Fairbanks
004S	009W	7-8, 10-13, 15-16	Fairbanks C-5	Fairbanks
004S	010W	11-12	Fairbanks C-5	Fairbanks
004S	010W	7-11	Fairbanks C-6	Fairbanks
004S	011W	7-12	Fairbanks C-6	Fairbanks
004S	012W	8-12	Fairbanks C-6	Fairbanks
004S	012W	6-8	Kantishna River C-1	Fairbanks
004S	013W	1, 9-12,16	Kantishna River C-1	Fairbanks
003S	013W	35-36	Kantishna River C-1	Fairbanks

Pursuant to AS 41.35.070, Preservation of Historic, Prehistoric, and Archaeological Resources Threatened by Public Construction, the DOT &PF is initiating this consultation with you to assist us in identifying historic properties that may be affected by the proposed project.

## Project Description

**Rehabilitation:** The existing approximately 12-mile roadway is proposed to undergo minor-relevelling in areas that have experienced settling, flattening of embankment side slopes, installation of new surface course, clearing of vegetation at slope toes, minor repair of three bridge crossings (Little Nenana River Bridge #1557, East Middle River Bridge #1559, and West Middle River Bridge #1558), and some drainage improvements including culvert replacement and ditch work. Existing turnouts are also proposed to be improved, and new turnouts may be constructed as needed to support hauling materials during construction. No realignment of the existing roadway is anticipated (see Figures 2-4).

**Extension:** Approximately 20 miles of new road is proposed to be constructed to extend the existing Totchaket Road, extending westerly to end at the Kantishna River. The first 16 miles of new road is proposed to be built within the City of Nenana's existing 500' wide right-of-way (ROW) easement, and new ROW acquisition would be required for the remainder (see Figures 2, 4-5). For the westernmost section of the proposed extension, there are two Proposed Alternatives:

**Alternative 1:** In this option, the proposed road will maintain the bearing of the preceding road extension alignment, extending westerly an additional 4.5 miles to the east bank of the Kantishna River (see Figure 5).

**Alternative 2:** In this option, the proposed road will alter course, taking on a northwesterly bearing. The proposed road would then extend approximately 3 miles over higher ground to terminate at a point further north near the Kantishna River (see Figure 5).

**Material Sources:** Materials to construct the road are anticipated to be extracted from combination of new site development within the floodplain of the Kantishna River near the western end of the new road (see Figure 5), utilization of material extracted within upland areas along the ROW alignment (see Figures 2, 4-5), as well as contractor-furnished from existing commercially available sources (see Figure 3 inset, owned and operated by the City of Nenana). Due to lack of information for the area, general material extraction zones have been identified for study (see Figures 2-5 in yellow). As more detailed data becomes available, the proposed material extraction zones will be refined.

### Preliminary Area of Potential Effect (APE)

The preliminary APE for this proposed project is shown on Figures 1-5 and consists of the 500' ROW boundary of the existing portion of the Totchaket Road (see Figures 1-4) and the proposed extension area (also 500' ROW) of the Totchaket Road (see Figures 1, 4-5), including the two possible alternatives (see Figure 5). Alternative 1 maintains the bearing of the preceding road extension alignment, extending westerly an additional 4.5 miles to the east bank of the Kantishna River. Alternative 2 alters the course of the Totchaket Road, extending approximately 3 miles in a northerly direction, also terminating at the Kantishna River. The preliminary APE also includes the city-owned material source, and the drivable surface of the associated haul route [Nenana Street, 6<sup>th</sup> Street, Parks Highway (near MP 304), 10<sup>th</sup> Avenue, and an unnamed existing trail] (see Figure 3 inset map). Additionally, the preliminary includes material extraction zones within the proposed alignment of the Totchaket Road extension area (see Figures 4-5, highlighted in yellow).

Finally, the preliminary APE covers the proposed material extraction zones adjacent to the two proposed alternatives. If Alternative 1 is selected, the preliminary APE will include two, smaller, material extraction zones (see Figure 5, highlighted in yellow). If Alternative 2 is selected, the preliminary APE will include one, larger, material extraction zone (see Figure 5, highlighted in yellow). Staging locations for this project have not been determined but will be included in the findings letter for this project.

The Area of Potential Effect (APE) will be finalized after comments are received from your agency and other consulting parties.

### **Identification Efforts**

A search of the Alaska Heritage Resources Survey-IBS (AHRS) database on January 12, 2022 indicated that no (0) AHRS sites are located within the preliminary APE.

A search of the Alaska Department of Natural Resources Division of Mining, Lands and Water Revised Statute (RS) 2477 database indicates that there is one (1) recognized public rights-of-way under this Statute within the preliminary APE. That RS 2477 trail is briefly described below:

*RST-346 Nenana-Kantishna Trail*- This trail begins at Nenana, Alaska and follows south and west along the eastern bank of the Teklanika River. It continues along the eastern bank of the Toklat River, traversing to the south and to the west, eventually crossing over to the western bank of the Toklat River. The trail continues on to cross the Clearwater River, following the western bank. The trail continues along the western bank of Myrtle Creek, and then along the northern bank of Canyon Creek. The trail ends in Kantishna, Alaska at the junction of Lake Creek. The trail traverses overland for approximately 100 miles between the two communities. The trail is listed as a winter trail on the topographic map layer in the AHRS database. A review of the satellite imagery revealed that the trail is not visible on the ground surface.

A search of the DOT&PF Northern Region Cultural Resources Library indicated that the existing portion of the Totchaket Road was previously surveyed for cultural resources (Proue and Neely 2009), and no sites were found within the preliminary APE as a result of that survey. The remaining portion of the preliminary APE has not been previously surveyed. A cultural resources survey for the new road extension (including both alternatives) will be completed by an as yet to be determined cultural resources consultant. The results of that survey will be included with the findings letter for this project. The DOT&PF Archaeologist-Cultural Resources Specialist (PQI) believes that this level of identification is sufficient for this project.

### **Consultation Efforts**

The following consulting parties are being contacted regarding this project: The Chief of the Office of History and Archaeology (OHA); Doyon, Limited; the City of Nenana; Nenana Native Association; Tanana Chiefs Conference; and Toghoththele Corporation.

If you have questions or comments related to this proposed project, I can be reached at the address above, by telephone at 907-451-2227, or by email at [holly.mckinney@alaska.gov](mailto:holly.mckinney@alaska.gov).

We request your input on our proposal so that we can incorporate your concerns into project development. Your timely response will greatly assist our compliance efforts and the preparation of any required environmental documentation. For that purpose, we request that you respond within thirty days of your receipt of this correspondence.

Sincerely,



Holly J. McKinney

Environmental Impact Analyst III-Archaeologist (PQI)  
State of Alaska DOT&PF Northern Region

Enclosures:

Figure 1: Project Overview Map  
Figures 2-5: Location Maps/Preliminary APE.

References:

Proue, M. and B. Neely  
2009 Nunivak #1 Drill Site and Totchaket Road Rehabilitation Monitoring Plan. Plan prepared for Fairweather, Inc. Exploration and Production Services. Northern Land Use Research, Inc., Anchorage.

Electronic cc w/enclosures:

Jonathan Hutchinson, P.E., DOT&PF, Northern Region, Project Manager  
William Sexton, DOT&PF Northern Region, Environmental Impact Analyst  
Brett Nelson, DOT &PF Northern Region, Regional Environmental Manager  
Kathy Price, DOT&PF Statewide Cultural Resource Manager



In Reply Refer To:  
Nenana-Totchaket Road  
State Funded Work: NSHWY00657  
Consultation Initiation

January 12, 2022

Ms. Eva Burk, Vice Chair  
Toghotthele Village Corporation  
PO Box 249  
Nenana, AK 99760

Dear Ms. Burk:

The Alaska Department of Transportation and Public Facilities (DOT&PF) is seeking to construct the Nenana-Totchaket Road from the Nenana River to the Kantishna River, near Nenana Alaska. The project will include improving approximately 12 miles of existing road and constructing 20 miles of new road (see Table 1 and Figures 1-5).

**Table 1: Project Location**

Township	Range	Section(s)	USGS Quad Map	Meridian
004S	008W	14, 18-23	Fairbanks C-5	Fairbanks
004S	009W	7-8, 10-13, 15-16	Fairbanks C-5	Fairbanks
004S	010W	11-12	Fairbanks C-5	Fairbanks
004S	010W	7-11	Fairbanks C-6	Fairbanks
004S	011W	7-12	Fairbanks C-6	Fairbanks
004S	012W	8-12	Fairbanks C-6	Fairbanks
004S	012W	6-8	Kantishna River C-1	Fairbanks
004S	013W	1, 9-12,16	Kantishna River C-1	Fairbanks
003S	013W	35-36	Kantishna River C-1	Fairbanks

Pursuant to AS 41.35.070, Preservation of Historic, Prehistoric, and Archaeological Resources Threatened by Public Construction, the DOT &PF is initiating this consultation with you to assist us in identifying historic properties that may be affected by the proposed project.

## Project Description

**Rehabilitation:** The existing approximately 12-mile roadway is proposed to undergo minor-relevelling in areas that have experienced settling, flattening of embankment side slopes, installation of new surface course, clearing of vegetation at slope toes, minor repair of three bridge crossings (Little Nenana River Bridge #1557, East Middle River Bridge #1559, and West Middle River Bridge #1558), and some drainage improvements including culvert replacement and ditch work. Existing turnouts are also proposed to be improved, and new turnouts may be constructed as needed to support hauling materials during construction. No realignment of the existing roadway is anticipated (see Figures 2-4).

**Extension:** Approximately 20 miles of new road is proposed to be constructed to extend the existing Totchaket Road, extending westerly to end at the Kantishna River. The first 16 miles of new road is proposed to be built within the City of Nenana's existing 500' wide right-of-way (ROW) easement, and new ROW acquisition would be required for the remainder (see Figures 2, 4-5). For the westernmost section of the proposed extension, there are two Proposed Alternatives:

**Alternative 1:** In this option, the proposed road will maintain the bearing of the preceding road extension alignment, extending westerly an additional 4.5 miles to the east bank of the Kantishna River (see Figure 5).

**Alternative 2:** In this option, the proposed road will alter course, taking on a northwesterly bearing. The proposed road would then extend approximately 3 miles over higher ground to terminate at a point further north near the Kantishna River (see Figure 5).

**Material Sources:** Materials to construct the road are anticipated to be extracted from combination of new site development within the floodplain of the Kantishna River near the western end of the new road (see Figure 5), utilization of material extracted within upland areas along the ROW alignment (see Figures 2, 4-5), as well as contractor-furnished from existing commercially available sources (see Figure 3 inset, owned and operated by the City of Nenana). Due to lack of information for the area, general material extraction zones have been identified for study (see Figures 2-5 in yellow). As more detailed data becomes available, the proposed material extraction zones will be refined.

### Preliminary Area of Potential Effect (APE)

The preliminary APE for this proposed project is shown on Figures 1-5 and consists of the 500' ROW boundary of the existing portion of the Totchaket Road (see Figures 1-4) and the proposed extension area (also 500' ROW) of the Totchaket Road (see Figures 1, 4-5), including the two possible alternatives (see Figure 5). Alternative 1 maintains the bearing of the preceding road extension alignment, extending westerly an additional 4.5 miles to the east bank of the Kantishna River. Alternative 2 alters the course of the Totchaket Road, extending approximately 3 miles in a northerly direction, also terminating at the Kantishna River. The preliminary APE also includes the city-owned material source, and the drivable surface of the associated haul route [Nenana Street, 6<sup>th</sup> Street, Parks Highway (near MP 304), 10<sup>th</sup> Avenue, and an unnamed existing trail] (see Figure 3 inset map). Additionally, the preliminary includes material extraction zones within the proposed alignment of the Totchaket Road extension area (see Figures 4-5, highlighted in yellow).

Finally, the preliminary APE covers the proposed material extraction zones adjacent to the two proposed alternatives. If Alternative 1 is selected, the preliminary APE will include two, smaller, material extraction zones (see Figure 5, highlighted in yellow). If Alternative 2 is selected, the preliminary APE will include one, larger, material extraction zone (see Figure 5, highlighted in yellow). Staging locations for this project have not been determined but will be included in the findings letter for this project.

The Area of Potential Effect (APE) will be finalized after comments are received from your agency and other consulting parties.

### **Identification Efforts**

A search of the Alaska Heritage Resources Survey-IBS (AHRS) database on January 12, 2022 indicated that no (0) AHRS sites are located within the preliminary APE.

A search of the Alaska Department of Natural Resources Division of Mining, Lands and Water Revised Statute (RS) 2477 database indicates that there is one (1) recognized public rights-of-way under this Statute within the preliminary APE. That RS 2477 trail is briefly described below:

*RST-346 Nenana-Kantishna Trail*- This trail begins at Nenana, Alaska and follows south and west along the eastern bank of the Teklanika River. It continues along the eastern bank of the Toklat River, traversing to the south and to the west, eventually crossing over to the western bank of the Toklat River. The trail continues on to cross the Clearwater River, following the western bank. The trail continues along the western bank of Myrtle Creek, and then along the northern bank of Canyon Creek. The trail ends in Kantishna, Alaska at the junction of Lake Creek. The trail traverses overland for approximately 100 miles between the two communities. The trail is listed as a winter trail on the topographic map layer in the AHRS database. A review of the satellite imagery revealed that the trail is not visible on the ground surface.

A search of the DOT&PF Northern Region Cultural Resources Library indicated that the existing portion of the Totchaket Road was previously surveyed for cultural resources (Proue and Neely 2009), and no sites were found within the preliminary APE as a result of that survey. The remaining portion of the preliminary APE has not been previously surveyed. A cultural resources survey for the new road extension (including both alternatives) will be completed by an as yet to be determined cultural resources consultant. The results of that survey will be included with the findings letter for this project. The DOT&PF Archaeologist-Cultural Resources Specialist (PQI) believes that this level of identification is sufficient for this project.

### **Consultation Efforts**

The following consulting parties are being contacted regarding this project: The Chief of the Office of History and Archaeology (OHA); Doyon, Limited; the City of Nenana; Nenana Native Association; Tanana Chiefs Conference; and Toghoththele Corporation.

If you have questions or comments related to this proposed project, I can be reached at the address above, by telephone at 907-451-2227, or by email at [holly.mckinney@alaska.gov](mailto:holly.mckinney@alaska.gov).



We request your input on our proposal so that we can incorporate your concerns into project development. Your timely response will greatly assist our compliance efforts and the preparation of any required environmental documentation. For that purpose, we request that you respond within thirty days of your receipt of this correspondence.

Sincerely,



Holly J. McKinney

Environmental Impact Analyst III-Archaeologist (PQI)  
State of Alaska DOT&PF Northern Region

Enclosures:

Figure 1: Project Overview Map  
Figures 2-5: Location Maps/Preliminary APE.

References:

Proue, M. and B. Neely  
2009 Nunivak #1 Drill Site and Totchaket Road Rehabilitation Monitoring Plan. Plan prepared for Fairweather, Inc. Exploration and Production Services. Northern Land Use Research, Inc., Anchorage.

Electronic cc w/enclosures:

Jonathan Hutchinson, P.E., DOT&PF, Northern Region, Project Manager  
William Sexton, DOT&PF Northern Region, Environmental Impact Analyst  
Brett Nelson, DOT &PF Northern Region, Regional Environmental Manager  
Kathy Price, DOT&PF Statewide Cultural Resource Manager



In Reply Refer To:  
Nenana-Totchaket Road  
State Funded Work: NSHWY00657  
Consultation Initiation

January 12, 2022

The Honorable Josh Verhagen, Mayor  
City of Nenana  
PO Box 70  
Nenana, AK 99760

Dear Mayor Verhagen:

The Alaska Department of Transportation and Public Facilities (DOT&PF) is seeking to construct the Nenana-Totchaket Road from the Nenana River to the Kantishna River, near Nenana Alaska. The project will include improving approximately 12 miles of existing road and constructing 20 miles of new road (see Table 1 and Figures 1-5).

**Table 1: Project Location**

Township	Range	Section(s)	USGS Quad Map	Meridian
004S	008W	14, 18-23	Fairbanks C-5	Fairbanks
004S	009W	7-8, 10-13, 15-16	Fairbanks C-5	Fairbanks
004S	010W	11-12	Fairbanks C-5	Fairbanks
004S	010W	7-11	Fairbanks C-6	Fairbanks
004S	011W	7-12	Fairbanks C-6	Fairbanks
004S	012W	8-12	Fairbanks C-6	Fairbanks
004S	012W	6-8	Kantishna River C-1	Fairbanks
004S	013W	1, 9-12,16	Kantishna River C-1	Fairbanks
003S	013W	35-36	Kantishna River C-1	Fairbanks

Pursuant to AS 41.35.070, Preservation of Historic, Prehistoric, and Archaeological Resources Threatened by Public Construction, the DOT &PF is initiating this consultation with you to assist us in identifying historic properties that may be affected by the proposed project.

## Project Description

**Rehabilitation:** The existing approximately 12-mile roadway is proposed to undergo minor-relevelling in areas that have experienced settling, flattening of embankment side slopes, installation of new surface course, clearing of vegetation at slope toes, minor repair of three bridge crossings (Little Nenana River Bridge #1557, East Middle River Bridge #1559, and West Middle River Bridge #1558), and some drainage improvements including culvert replacement and ditch work. Existing turnouts are also proposed to be improved, and new turnouts may be constructed as needed to support hauling materials during construction. No realignment of the existing roadway is anticipated (see Figures 2-4).

**Extension:** Approximately 20 miles of new road is proposed to be constructed to extend the existing Totchaket Road, extending westerly to end at the Kantishna River. The first 16 miles of new road is proposed to be built within the City of Nenana's existing 500' wide right-of-way (ROW) easement, and new ROW acquisition would be required for the remainder (see Figures 2, 4-5). For the westernmost section of the proposed extension, there are two Proposed Alternatives:

**Alternative 1:** In this option, the proposed road will maintain the bearing of the preceding road extension alignment, extending westerly an additional 4.5 miles to the east bank of the Kantishna River (see Figure 5).

**Alternative 2:** In this option, the proposed road will alter course, taking on a northwesterly bearing. The proposed road would then extend approximately 3 miles over higher ground to terminate at a point further north near the Kantishna River (see Figure 5).

**Material Sources:** Materials to construct the road are anticipated to be extracted from combination of new site development within the floodplain of the Kantishna River near the western end of the new road (see Figure 5), utilization of material extracted within upland areas along the ROW alignment (see Figures 2, 4-5), as well as contractor-furnished from existing commercially available sources (see Figure 3 inset, owned and operated by the City of Nenana). Due to lack of information for the area, general material extraction zones have been identified for study (see Figures 2-5 in yellow). As more detailed data becomes available, the proposed material extraction zones will be refined.

### Preliminary Area of Potential Effect (APE)

The preliminary APE for this proposed project is shown on Figures 1-5 and consists of the 500' ROW boundary of the existing portion of the Totchaket Road (see Figures 1-4) and the proposed extension area (also 500' ROW) of the Totchaket Road (see Figures 1, 4-5), including the two possible alternatives (see Figure 5). Alternative 1 maintains the bearing of the preceding road extension alignment, extending westerly an additional 4.5 miles to the east bank of the Kantishna River. Alternative 2 alters the course of the Totchaket Road, extending approximately 3 miles in a northerly direction, also terminating at the Kantishna River. The preliminary APE also includes the city-owned material source, and the drivable surface of the associated haul route [Nenana Street, 6<sup>th</sup> Street, Parks Highway (near MP 304), 10<sup>th</sup> Avenue, and an unnamed existing trail] (see Figure 3 inset map). Additionally, the preliminary includes material extraction zones within the proposed alignment of the Totchaket Road extension area (see Figures 4-5, highlighted in yellow).

Finally, the preliminary APE covers the proposed material extraction zones adjacent to the two proposed alternatives. If Alternative 1 is selected, the preliminary APE will include two, smaller, material extraction zones (see Figure 5, highlighted in yellow). If Alternative 2 is selected, the preliminary APE will include one, larger, material extraction zone (see Figure 5, highlighted in yellow). Staging locations for this project have not been determined but will be included in the findings letter for this project.

The Area of Potential Effect (APE) will be finalized after comments are received from your agency and other consulting parties.

### **Identification Efforts**

A search of the Alaska Heritage Resources Survey-IBS (AHRS) database on January 12, 2022 indicated that no (0) AHRS sites are located within the preliminary APE.

A search of the Alaska Department of Natural Resources Division of Mining, Lands and Water Revised Statute (RS) 2477 database indicates that there is one (1) recognized public rights-of-way under this Statute within the preliminary APE. That RS 2477 trail is briefly described below:

*RST-346 Nenana-Kantishna Trail*- This trail begins at Nenana, Alaska and follows south and west along the eastern bank of the Teklanika River. It continues along the eastern bank of the Toklat River, traversing to the south and to the west, eventually crossing over to the western bank of the Toklat River. The trail continues on to cross the Clearwater River, following the western bank. The trail continues along the western bank of Myrtle Creek, and then along the northern bank of Canyon Creek. The trail ends in Kantishna, Alaska at the junction of Lake Creek. The trail traverses overland for approximately 100 miles between the two communities. The trail is listed as a winter trail on the topographic map layer in the AHRS database. A review of the satellite imagery revealed that the trail is not visible on the ground surface.

A search of the DOT&PF Northern Region Cultural Resources Library indicated that the existing portion of the Totchaket Road was previously surveyed for cultural resources (Proue and Neely 2009), and no sites were found within the preliminary APE as a result of that survey. The remaining portion of the preliminary APE has not been previously surveyed. A cultural resources survey for the new road extension (including both alternatives) will be completed by an as yet to be determined cultural resources consultant. The results of that survey will be included with the findings letter for this project. The DOT&PF Archaeologist-Cultural Resources Specialist (PQI) believes that this level of identification is sufficient for this project.

### **Consultation Efforts**

The following consulting parties are being contacted regarding this project: The Chief of the Office of History and Archaeology (OHA); Doyon, Limited; the City of Nenana; Nenana Native Association; Tanana Chiefs Conference; and Toghoththele Corporation.

If you have questions or comments related to this proposed project, I can be reached at the address above, by telephone at 907-451-2227, or by email at [holly.mckinney@alaska.gov](mailto:holly.mckinney@alaska.gov).

We request your input on our proposal so that we can incorporate your concerns into project development. Your timely response will greatly assist our compliance efforts and the preparation of any required environmental documentation. For that purpose, we request that you respond within thirty days of your receipt of this correspondence.

Sincerely,



Holly J. McKinney

Environmental Impact Analyst III-Archaeologist (PQI)  
State of Alaska DOT&PF Northern Region

Enclosures:

Figure 1: Project Overview Map  
Figures 2-5: Location Maps/Preliminary APE.

References:

Proue, M. and B. Neely  
2009 Nunivak #1 Drill Site and Totchaket Road Rehabilitation Monitoring Plan. Plan prepared for Fairweather, Inc. Exploration and Production Services. Northern Land Use Research, Inc., Anchorage.

Electronic cc w/enclosures:

Jonathan Hutchinson, P.E., DOT&PF, Northern Region, Project Manager  
William Sexton, DOT&PF Northern Region, Environmental Impact Analyst  
Brett Nelson, DOT &PF Northern Region, Regional Environmental Manager  
Kathy Price, DOT&PF Statewide Cultural Resource Manager



In Reply Refer To:  
Nenana-Totchaket Road  
State Funded Work: NSHWY00657  
Consultation Initiation

January 12, 2022

Pollack "PJ" Simon Chief/Chairman  
Tanana Chiefs Conference  
122 First Avenue, Suite 600  
Fairbanks, Alaska 99701

Dear Mr. Simon:

The Alaska Department of Transportation and Public Facilities (DOT&PF) is seeking to construct the Nenana-Totchaket Road from the Nenana River to the Kantishna River, near Nenana Alaska. The project will include improving approximately 12 miles of existing road and constructing 20 miles of new road (see Table 1 and Figures 1-5).

**Table 1: Project Location**

Township	Range	Section(s)	USGS Quad Map	Meridian
004S	008W	14, 18-23	Fairbanks C-5	Fairbanks
004S	009W	7-8, 10-13, 15-16	Fairbanks C-5	Fairbanks
004S	010W	11-12	Fairbanks C-5	Fairbanks
004S	010W	7-11	Fairbanks C-6	Fairbanks
004S	011W	7-12	Fairbanks C-6	Fairbanks
004S	012W	8-12	Fairbanks C-6	Fairbanks
004S	012W	6-8	Kantishna River C-1	Fairbanks
004S	013W	1, 9-12,16	Kantishna River C-1	Fairbanks
003S	013W	35-36	Kantishna River C-1	Fairbanks

Pursuant to AS 41.35.070, Preservation of Historic, Prehistoric, and Archaeological Resources Threatened by Public Construction, the DOT &PF is initiating this consultation with you to assist us in identifying historic properties that may be affected by the proposed project.

## Project Description

**Rehabilitation:** The existing approximately 12-mile roadway is proposed to undergo minor-relevelling in areas that have experienced settling, flattening of embankment side slopes, installation of new surface course, clearing of vegetation at slope toes, minor repair of three bridge crossings (Little Nenana River Bridge #1557, East Middle River Bridge #1559, and West Middle River Bridge #1558), and some drainage improvements including culvert replacement and ditch work. Existing turnouts are also proposed to be improved, and new turnouts may be constructed as needed to support hauling materials during construction. No realignment of the existing roadway is anticipated (see Figures 2-4).

**Extension:** Approximately 20 miles of new road is proposed to be constructed to extend the existing Totchaket Road, extending westerly to end at the Kantishna River. The first 16 miles of new road is proposed to be built within the City of Nenana's existing 500' wide right-of-way (ROW) easement, and new ROW acquisition would be required for the remainder (see Figures 2, 4-5). For the westernmost section of the proposed extension, there are two Proposed Alternatives:

**Alternative 1:** In this option, the proposed road will maintain the bearing of the preceding road extension alignment, extending westerly an additional 4.5 miles to the east bank of the Kantishna River (see Figure 5).

**Alternative 2:** In this option, the proposed road will alter course, taking on a northwesterly bearing. The proposed road would then extend approximately 3 miles over higher ground to terminate at a point further north near the Kantishna River (see Figure 5).

**Material Sources:** Materials to construct the road are anticipated to be extracted from combination of new site development within the floodplain of the Kantishna River near the western end of the new road (see Figure 5), utilization of material extracted within upland areas along the ROW alignment (see Figures 2, 4-5), as well as contractor-furnished from existing commercially available sources (see Figure 3 inset, owned and operated by the City of Nenana). Due to lack of information for the area, general material extraction zones have been identified for study (see Figures 2-5 in yellow). As more detailed data becomes available, the proposed material extraction zones will be refined.

### Preliminary Area of Potential Effect (APE)

The preliminary APE for this proposed project is shown on Figures 1-5 and consists of the 500' ROW boundary of the existing portion of the Totchaket Road (see Figures 1-4) and the proposed extension area (also 500' ROW) of the Totchaket Road (see Figures 1, 4-5), including the two possible alternatives (see Figure 5). Alternative 1 maintains the bearing of the preceding road extension alignment, extending westerly an additional 4.5 miles to the east bank of the Kantishna River. Alternative 2 alters the course of the Totchaket Road, extending approximately 3 miles in a northerly direction, also terminating at the Kantishna River. The preliminary APE also includes the city-owned material source, and the drivable surface of the associated haul route [Nenana Street, 6<sup>th</sup> Street, Parks Highway (near MP 304), 10<sup>th</sup> Avenue, and an unnamed existing trail] (see Figure 3 inset map). Additionally, the preliminary includes material extraction zones within the proposed alignment of the Totchaket Road extension area (see Figures 4-5, highlighted in yellow).

Finally, the preliminary APE covers the proposed material extraction zones adjacent to the two proposed alternatives. If Alternative 1 is selected, the preliminary APE will include two, smaller, material extraction zones (see Figure 5, highlighted in yellow). If Alternative 2 is selected, the preliminary APE will include one, larger, material extraction zone (see Figure 5, highlighted in yellow). Staging locations for this project have not been determined but will be included in the findings letter for this project.

The Area of Potential Effect (APE) will be finalized after comments are received from your agency and other consulting parties.

### **Identification Efforts**

A search of the Alaska Heritage Resources Survey-IBS (AHRS) database on January 12, 2022 indicated that no (0) AHRS sites are located within the preliminary APE.

A search of the Alaska Department of Natural Resources Division of Mining, Lands and Water Revised Statute (RS) 2477 database indicates that there is one (1) recognized public rights-of-way under this Statute within the preliminary APE. That RS 2477 trail is briefly described below:

*RST-346 Nenana-Kantishna Trail*- This trail begins at Nenana, Alaska and follows south and west along the eastern bank of the Teklanika River. It continues along the eastern bank of the Toklat River, traversing to the south and to the west, eventually crossing over to the western bank of the Toklat River. The trail continues on to cross the Clearwater River, following the western bank. The trail continues along the western bank of Myrtle Creek, and then along the northern bank of Canyon Creek. The trail ends in Kantishna, Alaska at the junction of Lake Creek. The trail traverses overland for approximately 100 miles between the two communities. The trail is listed as a winter trail on the topographic map layer in the AHRS database. A review of the satellite imagery revealed that the trail is not visible on the ground surface.

A search of the DOT&PF Northern Region Cultural Resources Library indicated that the existing portion of the Totchaket Road was previously surveyed for cultural resources (Proue and Neely 2009), and no sites were found within the preliminary APE as a result of that survey. The remaining portion of the preliminary APE has not been previously surveyed. A cultural resources survey for the new road extension (including both alternatives) will be completed by an as yet to be determined cultural resources consultant. The results of that survey will be included with the findings letter for this project. The DOT&PF Archaeologist-Cultural Resources Specialist (PQI) believes that this level of identification is sufficient for this project.

### **Consultation Efforts**

The following consulting parties are being contacted regarding this project: The Chief of the Office of History and Archaeology (OHA); Doyon, Limited; the City of Nenana; Nenana Native Association; Tanana Chiefs Conference; and Toghoththele Corporation.

If you have questions or comments related to this proposed project, I can be reached at the address above, by telephone at 907-451-2227, or by email at [holly.mckinney@alaska.gov](mailto:holly.mckinney@alaska.gov).



We request your input on our proposal so that we can incorporate your concerns into project development. Your timely response will greatly assist our compliance efforts and the preparation of any required environmental documentation. For that purpose, we request that you respond within thirty days of your receipt of this correspondence.

Sincerely,



Holly J. McKinney

Environmental Impact Analyst III-Archaeologist (PQI)  
State of Alaska DOT&PF Northern Region

Enclosures:

Figure 1: Project Overview Map  
Figures 2-5: Location Maps/Preliminary APE.

References:

Proue, M. and B. Neely  
2009 Nunivak #1 Drill Site and Totchaket Road Rehabilitation Monitoring Plan. Plan prepared for Fairweather, Inc. Exploration and Production Services. Northern Land Use Research, Inc., Anchorage.

Electronic cc w/enclosures:

Jonathan Hutchinson, P.E., DOT&PF, Northern Region, Project Manager  
William Sexton, DOT&PF Northern Region, Environmental Impact Analyst  
Brett Nelson, DOT &PF Northern Region, Regional Environmental Manager  
Kathy Price, DOT&PF Statewide Cultural Resource Manager



In Reply Refer To:  
Nenana-Totchaket Road  
State Funded Work: NSHWY00657  
Consultation Initiation

January 12, 2022

Ms. Shayna Rowe, Tribal Administrator  
Nenana Native Association  
PO Box 369  
Nenana, Alaska 99760-0356

Dear Ms. Rowe:

The Alaska Department of Transportation and Public Facilities (DOT&PF) is seeking to construct the Nenana-Totchaket Road from the Nenana River to the Kantishna River, near Nenana Alaska. The project will include improving approximately 12 miles of existing road and constructing 20 miles of new road (see Table 1 and Figures 1-5).

**Table 1: Project Location**

Township	Range	Section(s)	USGS Quad Map	Meridian
004S	008W	14, 18-23	Fairbanks C-5	Fairbanks
004S	009W	7-8, 10-13, 15-16	Fairbanks C-5	Fairbanks
004S	010W	11-12	Fairbanks C-5	Fairbanks
004S	010W	7-11	Fairbanks C-6	Fairbanks
004S	011W	7-12	Fairbanks C-6	Fairbanks
004S	012W	8-12	Fairbanks C-6	Fairbanks
004S	012W	6-8	Kantishna River C-1	Fairbanks
004S	013W	1, 9-12,16	Kantishna River C-1	Fairbanks
003S	013W	35-36	Kantishna River C-1	Fairbanks

Pursuant to AS 41.35.070, Preservation of Historic, Prehistoric, and Archaeological Resources Threatened by Public Construction, the DOT &PF is initiating this consultation with you to assist us in identifying historic properties that may be affected by the proposed project.

## Project Description

**Rehabilitation:** The existing approximately 12-mile roadway is proposed to undergo minor-relevelling in areas that have experienced settling, flattening of embankment side slopes, installation of new surface course, clearing of vegetation at slope toes, minor repair of three bridge crossings (Little Nenana River Bridge #1557, East Middle River Bridge #1559, and West Middle River Bridge #1558), and some drainage improvements including culvert replacement and ditch work. Existing turnouts are also proposed to be improved, and new turnouts may be constructed as needed to support hauling materials during construction. No realignment of the existing roadway is anticipated (see Figures 2-4).

**Extension:** Approximately 20 miles of new road is proposed to be constructed to extend the existing Totchaket Road, extending westerly to end at the Kantishna River. The first 16 miles of new road is proposed to be built within the City of Nenana's existing 500' wide right-of-way (ROW) easement, and new ROW acquisition would be required for the remainder (see Figures 2, 4-5). For the westernmost section of the proposed extension, there are two Proposed Alternatives:

**Alternative 1:** In this option, the proposed road will maintain the bearing of the preceding road extension alignment, extending westerly an additional 4.5 miles to the east bank of the Kantishna River (see Figure 5).

**Alternative 2:** In this option, the proposed road will alter course, taking on a northwesterly bearing. The proposed road would then extend approximately 3 miles over higher ground to terminate at a point further north near the Kantishna River (see Figure 5).

**Material Sources:** Materials to construct the road are anticipated to be extracted from combination of new site development within the floodplain of the Kantishna River near the western end of the new road (see Figure 5), utilization of material extracted within upland areas along the ROW alignment (see Figures 2, 4-5), as well as contractor-furnished from existing commercially available sources (see Figure 3 inset, owned and operated by the City of Nenana). Due to lack of information for the area, general material extraction zones have been identified for study (see Figures 2-5 in yellow). As more detailed data becomes available, the proposed material extraction zones will be refined.

### Preliminary Area of Potential Effect (APE)

The preliminary APE for this proposed project is shown on Figures 1-5 and consists of the 500' ROW boundary of the existing portion of the Totchaket Road (see Figures 1-4) and the proposed extension area (also 500' ROW) of the Totchaket Road (see Figures 1, 4-5), including the two possible alternatives (see Figure 5). Alternative 1 maintains the bearing of the preceding road extension alignment, extending westerly an additional 4.5 miles to the east bank of the Kantishna River. Alternative 2 alters the course of the Totchaket Road, extending approximately 3 miles in a northerly direction, also terminating at the Kantishna River. The preliminary APE also includes the city-owned material source, and the drivable surface of the associated haul route [Nenana Street, 6<sup>th</sup> Street, Parks Highway (near MP 304), 10<sup>th</sup> Avenue, and an unnamed existing trail] (see Figure 3 inset map). Additionally, the preliminary includes material extraction zones within the proposed alignment of the Totchaket Road extension area (see Figures 4-5, highlighted in yellow).

Finally, the preliminary APE covers the proposed material extraction zones adjacent to the two proposed alternatives. If Alternative 1 is selected, the preliminary APE will include two, smaller, material extraction zones (see Figure 5, highlighted in yellow). If Alternative 2 is selected, the preliminary APE will include one, larger, material extraction zone (see Figure 5, highlighted in yellow). Staging locations for this project have not been determined but will be included in the findings letter for this project.

The Area of Potential Effect (APE) will be finalized after comments are received from your agency and other consulting parties.

### **Identification Efforts**

A search of the Alaska Heritage Resources Survey-IBS (AHRS) database on January 12, 2022 indicated that no (0) AHRS sites are located within the preliminary APE.

A search of the Alaska Department of Natural Resources Division of Mining, Lands and Water Revised Statute (RS) 2477 database indicates that there is one (1) recognized public rights-of-way under this Statute within the preliminary APE. That RS 2477 trail is briefly described below:

*RST-346 Nenana-Kantishna Trail*- This trail begins at Nenana, Alaska and follows south and west along the eastern bank of the Teklanika River. It continues along the eastern bank of the Toklat River, traversing to the south and to the west, eventually crossing over to the western bank of the Toklat River. The trail continues on to cross the Clearwater River, following the western bank. The trail continues along the western bank of Myrtle Creek, and then along the northern bank of Canyon Creek. The trail ends in Kantishna, Alaska at the junction of Lake Creek. The trail traverses overland for approximately 100 miles between the two communities. The trail is listed as a winter trail on the topographic map layer in the AHRS database. A review of the satellite imagery revealed that the trail is not visible on the ground surface.

A search of the DOT&PF Northern Region Cultural Resources Library indicated that the existing portion of the Totchaket Road was previously surveyed for cultural resources (Proue and Neely 2009), and no sites were found within the preliminary APE as a result of that survey. The remaining portion of the preliminary APE has not been previously surveyed. A cultural resources survey for the new road extension (including both alternatives) will be completed by an as yet to be determined cultural resources consultant. The results of that survey will be included with the findings letter for this project. The DOT&PF Archaeologist-Cultural Resources Specialist (PQI) believes that this level of identification is sufficient for this project.

### **Consultation Efforts**

The following consulting parties are being contacted regarding this project: The Chief of the Office of History and Archaeology (OHA); Doyon, Limited; the City of Nenana; Nenana Native Association; Tanana Chiefs Conference; and Toghoththele Corporation.

If you have questions or comments related to this proposed project, I can be reached at the address above, by telephone at 907-451-2227, or by email at [holly.mckinney@alaska.gov](mailto:holly.mckinney@alaska.gov).

We request your input on our proposal so that we can incorporate your concerns into project development. Your timely response will greatly assist our compliance efforts and the preparation of any required environmental documentation. For that purpose, we request that you respond within thirty days of your receipt of this correspondence.

Sincerely,



Holly J. McKinney

Environmental Impact Analyst III-Archaeologist (PQI)  
State of Alaska DOT&PF Northern Region

Enclosures:

Figure 1: Project Overview Map  
Figures 2-5: Location Maps/Preliminary APE.

References:

Proue, M. and B. Neely  
2009 Nunivak #1 Drill Site and Totchaket Road Rehabilitation Monitoring Plan. Plan prepared for Fairweather, Inc. Exploration and Production Services. Northern Land Use Research, Inc., Anchorage.

Electronic cc w/enclosures:

Jonathan Hutchinson, P.E., DOT&PF, Northern Region, Project Manager  
William Sexton, DOT&PF Northern Region, Environmental Impact Analyst  
Brett Nelson, DOT &PF Northern Region, Regional Environmental Manager  
Kathy Price, DOT&PF Statewide Cultural Resource Manager

## Initiation Responses

**From:** [Ortiz, Liz M \(DNR\)](#)  
**To:** [McKinney, Holly Jean \(DOT\)](#)  
**Cc:** [Hutchinson, Jonathan J \(DOT\)](#); [Sexton, William J \(DOT\)](#); [Maybrier, Scott L \(DOT\)](#); [Nelson, Brett D \(DOT\)](#); [Price, Kathy E \(DOT\)](#)  
**Subject:** RE: NSHWY00657 Nenana Totchaket Road Initiation  
**Date:** Friday, January 28, 2022 11:16:01 AM  
**Attachments:** [image001.png](#)

---

3130-2R DOT&PF 2022-00038

Good morning Holly,

The Alaska State Historic Preservation Office (AK SHPO) received your correspondence (dated January 12, 2022) concerning the Nenana Totchaket Road rehabilitation and extension project on January 12, 2022. Following review of the documentation provided, we are satisfied with the level of investigation suggested for the road extension project as proposed. Based on the results of that cultural resources, and once materials sources outside of the project survey area are identified, additional investigations may be appropriate.

Thank you for the opportunity to review and comment. We look forward to continuing consultation on the Nenana Totchaket Road project. Please contact me at (907)269-8722 or [liz.ortiz@alaska.gov](mailto:liz.ortiz@alaska.gov) if you have any questions or if we can be of further assistance.

Liz Ortiz

Archaeologist II - Review and Compliance  
Alaska State Historic Preservation Office  
Office of History and Archaeology  
Department of Natural Resources  
550 W. 7th Ave, Suite 1310  
Anchorage AK, 99501  
(907) 269-8722  
[liz.ortiz@alaska.gov](mailto:liz.ortiz@alaska.gov)

We are currently on a hybrid schedule; email communication is best. Be well!

---

**From:** Ortiz, Liz M (DNR) <liz.ortiz@alaska.gov>  
**Sent:** Wednesday, January 12, 2022 12:40 PM  
**To:** McKinney, Holly Jean (DOT) <holly.mckinney@alaska.gov>  
**Cc:** DNR, Parks OHA Review Compliance (DNR sponsored) <oha.revcomp@alaska.gov>; Ortiz, Liz M (DNR) <liz.ortiz@alaska.gov>; Hutchinson, Jonathan J (DOT) <jonathan.hutchinson@alaska.gov>; Sexton, William J (DOT) <william.sexton@alaska.gov>; Maybrier, Scott L (DOT) <scott.maybrier@alaska.gov>; Nelson, Brett D (DOT) <brett.nelson@alaska.gov>; Price, Kathy E (DOT) <kathy.price@alaska.gov>  
**Subject:** FW: NSHWY00657 Nenana Totchaket Road Initiation

Hi Holly,

Initiation packet received and logged with me under file number 2022-00038.

I will get this back to you soon,

Thanks!  
Liz Ortiz

Archaeologist II - Review and Compliance  
Alaska State Historic Preservation Office  
Office of History and Archaeology  
Department of Natural Resources  
550 W. 7<sup>th</sup> Ave, Suite 1310  
Anchorage AK, 99501  
(907) 269-8722  
[liz.ortiz@alaska.gov](mailto:liz.ortiz@alaska.gov)

Due to Covid-19 concerns, we are on a hybrid schedule. Email is the best communication method. Be Well!

---

**From:** McKinney, Holly Jean (DOT) <[holly.mckinney@alaska.gov](mailto:holly.mckinney@alaska.gov)>  
**Sent:** Wednesday, January 12, 2022 12:05 PM  
**To:** DNR, Parks OHA Review Compliance (DNR sponsored) <[oha.revcomp@alaska.gov](mailto:oha.revcomp@alaska.gov)>  
**Cc:** Ortiz, Liz M (DNR) <[liz.ortiz@alaska.gov](mailto:liz.ortiz@alaska.gov)>; Hutchinson, Jonathan J (DOT) <[jonathan.hutchinson@alaska.gov](mailto:jonathan.hutchinson@alaska.gov)>; Sexton, William J (DOT) <[william.sexton@alaska.gov](mailto:william.sexton@alaska.gov)>; Maybrier, Scott L (DOT) <[scott.maybrier@alaska.gov](mailto:scott.maybrier@alaska.gov)>; Nelson, Brett D (DOT) <[brett.nelson@alaska.gov](mailto:brett.nelson@alaska.gov)>; Price, Kathy E (DOT) <[kathy.price@alaska.gov](mailto:kathy.price@alaska.gov)>  
**Subject:** NSHWY00657 Nenana Totchaket Road Initiation

Hi Liz,

Please see attached consultation initiation letter for the Nenana Totchaket Road project.

Best,  
Holly



**Holly McKinney, PhD**  
**Archaeologist (PQI)**



**Cultural Resource Specialist**

**Alaska DOT&PF**

2301 Peger Road / Fairbanks, AK 99709

Office (907) 451-2227

Fax (907)451-5126

In-Office Schedule: Monday-Friday 7:00AM-3:00PM

**\*CONFIDENTIALITY NOTICE:** This email (and any attachments) are for the use of the intended recipient(s) only. The information contained in this communication may be confidential and privileged. If you have received this email in error, please notify the sender immediately and then delete it. If you are not the intended recipient, you must not keep, use, disclose, copy or distribute this email without the author's prior permission.\*

## McKinney, Holly Jean (DOT)

---

**From:** Aaron Schutt <schutta@doyon.com>  
**Sent:** Wednesday, January 12, 2022 3:48 PM  
**To:** McKinney, Holly Jean (DOT)  
**Cc:** Jamie Marunde  
**Subject:** RE: NSHWY00657 Nenana Totchaket Road Initiation

**CAUTION:** This email originated from outside the State of Alaska mail system. Do not click links or open attachments unless you recognize the sender and know the content is safe.

Thank you. We are very interested in and supportive of this project. Aaron

---

**From:** McKinney, Holly Jean (DOT) <holly.mckinney@alaska.gov>  
**Sent:** Wednesday, January 12, 2022 12:21 PM  
**To:** Aaron Schutt <schutta@doyon.com>  
**Subject:** NSHWY00657 Nenana Totchaket Road Initiation

[**External Mail - CAUTION: Do not open unexpected attachments or links.**]

---

Dear Mr. Schutt,

Please see attached consultation initiation letter for the Nenana Totchaket Road project.

Sincerely,  
Holly McKinney



Holly McKinney, PhD  
Archaeologist (PQI)  
Cultural Resource Specialist  
Alaska DOT&PF  
2301 Peger Road / Fairbanks, AK 99709  
Office (907) 451-2227  
Fax (907)451-5126

In-Office Schedule: Monday-Friday 7:00AM-3:00PM

**\*CONFIDENTIALITY NOTICE:** This email (and any attachments) are for the use of the intended recipient(s) only. The information contained in this communication may be confidential and privileged. If you have received this email in error, please notify the sender immediately and then delete it. If you are not the intended recipient, you must not keep, use, disclose, copy or distribute this email without the author's prior permission.\*

Stantec Inc. Cultural Resource Survey Report  
*Confidential*

Findings Letter  
*Confidential*

OHA Conditional Concurrence  
*Confidential*

Follow-Up Findings Letter  
*Confidential*

## OHA Concurrence



THE STATE  
of **ALASKA**  
GOVERNOR MIKE DUNLEAVY

Department of Natural Resources

DIVISION OF PARKS AND OUTDOOR RECREATION  
Office of History & Archaeology

550 West 7<sup>th</sup> Avenue, Suite 1310  
Anchorage, AK 99501-3561  
907-269-8700

<http://dnr.alaska.gov/parks/oha>

October 17, 2022

File No.: 3130-2R DOT&PF / 2022-00038

Holly McKinney  
Cultural Resource Specialist  
Northern Region DOT&PF  
2301 Peger Road  
Fairbanks, AK 99709

Subject: Nenana-Totchaket Road: Follow-up Findings for the Existing Portion of Totchaket Road

Dear Dr. McKinney:

The Alaska State Historic Preservation Office (AK SHPO)/ Office of History and Archaeology (OHA) received the subject project for review under the Alaska Historic Preservation Act (AHPA, AS 41.35.070) with a request to expedite our response on October 14, 2022. Included in the documentation was the survey report titled *Nenana-Totchaket Road Cultural Resource Survey Report: Existing Road Section*.

Following our review of the documentation provided, we concur that site FAI-02808 is eligible for the National Register of Historic Places (NRHP) under Criterion D. [REDACTED]

[REDACTED] The avoidance measures include having an SPI-qualified professional monitor the installation of temporary fencing to restrict project activities to the existing road prism and prohibiting certain activities from occurring in this area, such as ditch work or vegetation clearing. As such, we believe a finding of no historic properties adversely affected is appropriate for the proposed project.

Please note that our office will continue to review the cultural resources report. We will follow up with you and the contractor as necessary to discuss any findings or next steps regarding methods and performance as the survey and subsequent report was subject to SCRIP 2022-26.

We look forward to continued consultation on the project. Please contact Sarah Meitl at 907-269-8720 or [sarah.meitl@alaska.gov](mailto:sarah.meitl@alaska.gov) if you have any questions or if we can be of further assistance.

Sincerely,

A handwritten signature in blue ink that reads "Judith E. Bittner".

Judith E. Bittner  
Chief, Office of History & Archaeology  
State Historic Preservation Officer

JEB:sjm